

**DRAWING NOTES:**  
 DO NOT SCALE THE DRAWINGS.  
 UNLESS OTHERWISE INDICATED, PLAN DIMENSIONS ARE  
 TO COLUMN GRID OR CENTERLINES, NOMINAL SURFACE  
 OF MASONRY, GYPSUM BOARDS OR CONCRETE WALLS

29th floor common area

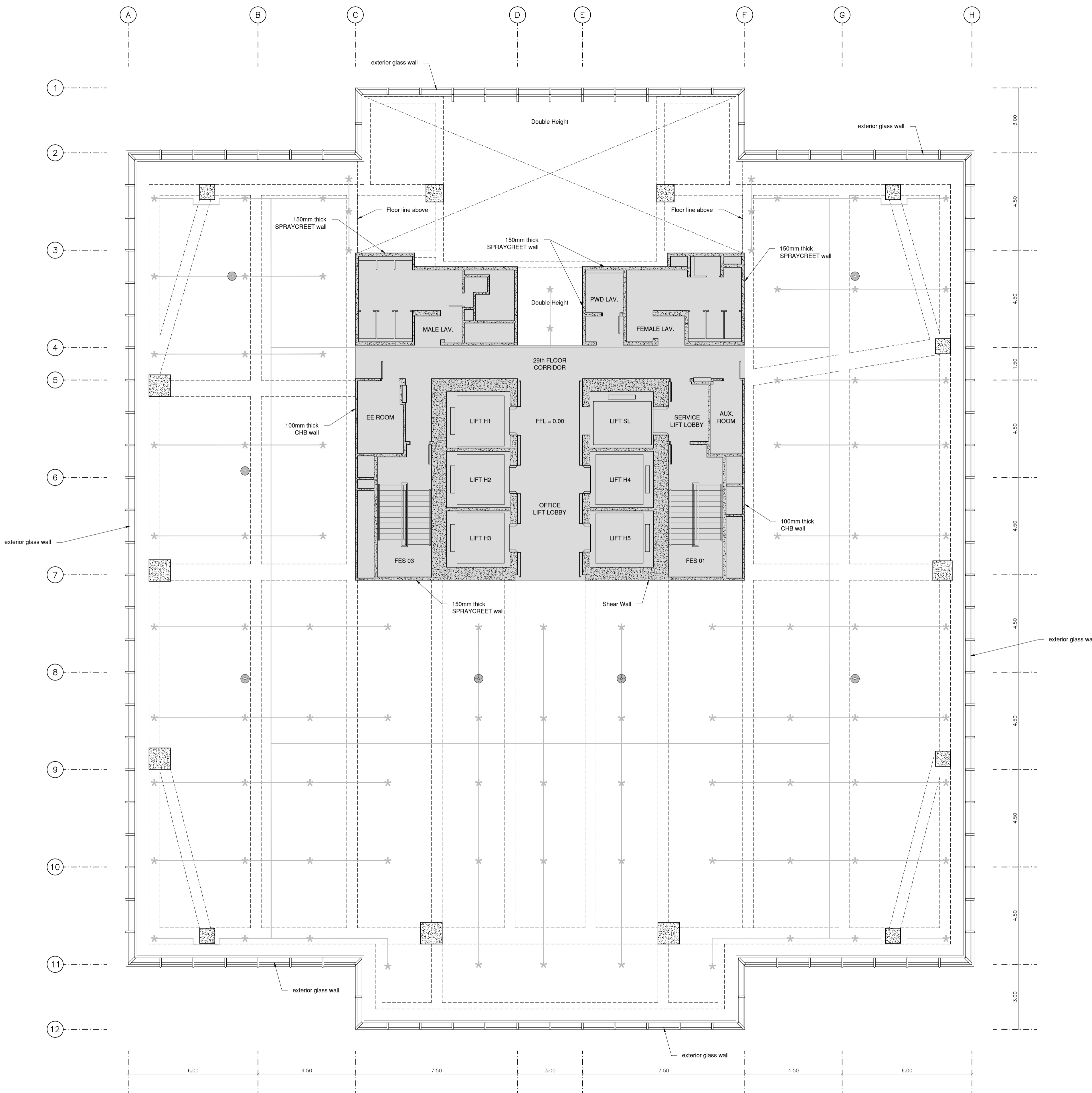
**IOM**  
 International Organization for Migration

**IOM Office extension**  
 6789, Ayala, Manila, Philippines

**Architecture**  
 Construction Documents  
 Site Condition

July 2016  
 Floor plan  
 1:100

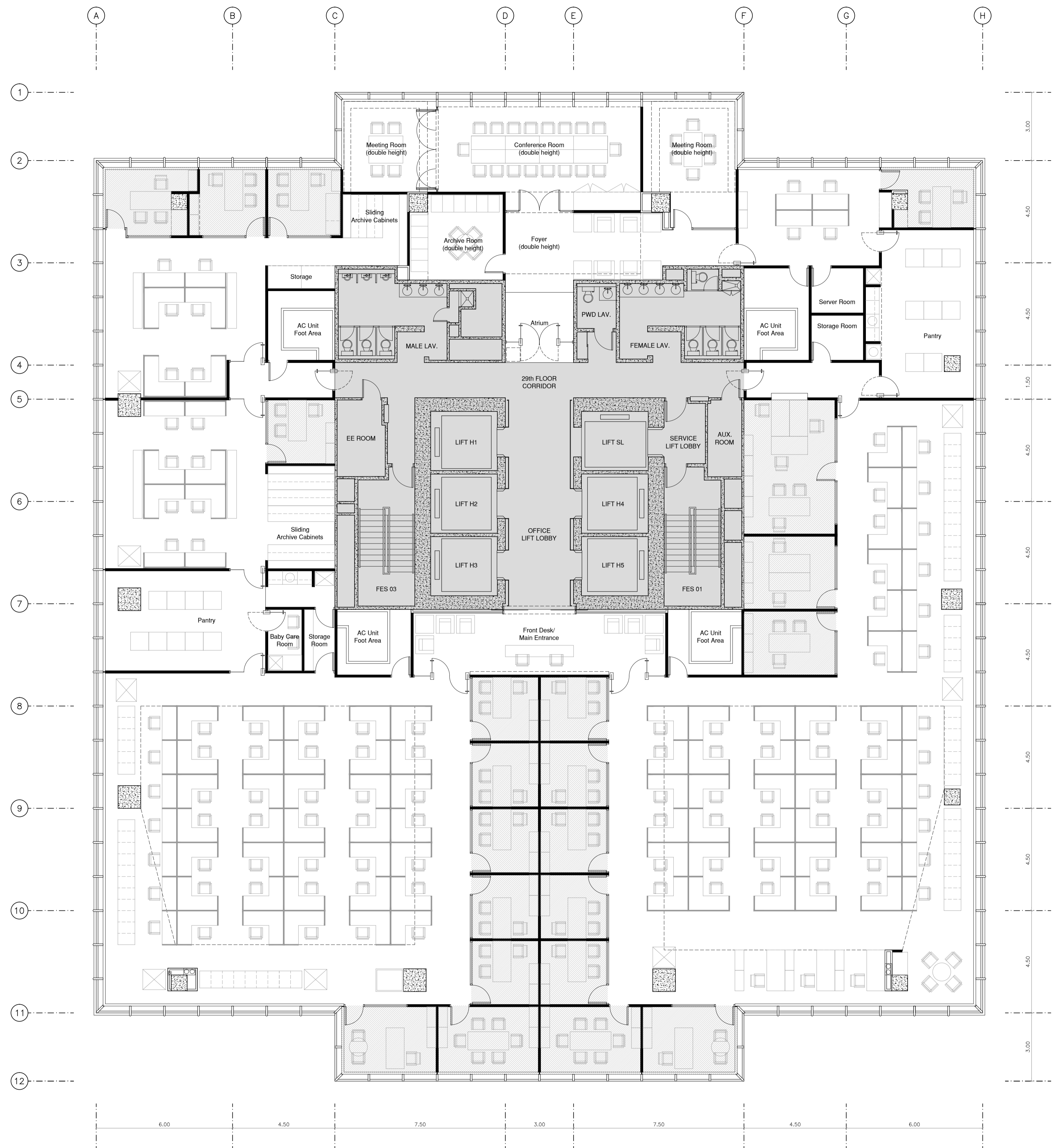
**IOM-6789-CD-01**



**DRAWING NOTES:**  
 DO NOT SCALE THE DRAWINGS.  
 UNLESS OTHERWISE INDICATED, PLAN DIMENSIONS ARE TO COLUMN GRID OR CENTERLINES, NOMINAL SURFACE OF MASONRY, GYPSUM BOARDS OR CONCRETE WALLS

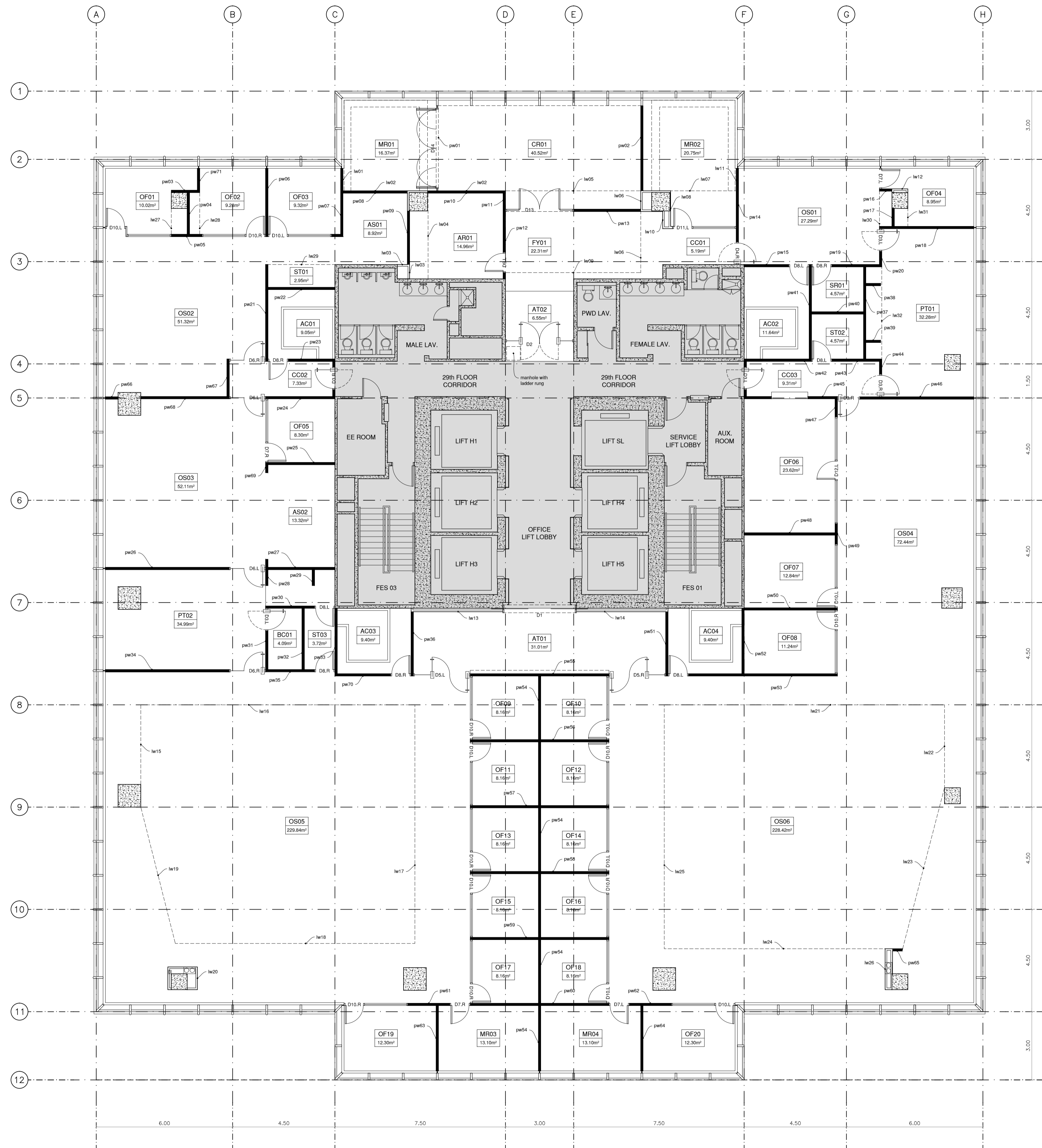
29th floor common area

\* existing sprinklers  
 ⊙ existing smoke detectors



**DRAWING NOTES:**  
 DO NOT SCALE THE DRAWINGS.  
 UNLESS OTHERWISE INDICATED, PLAN DIMENSIONS ARE TO COLUMN GRID ON CENTRILINES, NOMINAL SURFACE OF MASONRY, GYPSUM BOARDS OR CONCRETE WALLS

- 29th floor common area
- Enclosed Offices (22)



**DRAWING NOTES:**  
 DO NOT SCALE THE DRAWINGS.  
 UNLESS OTHERWISE INDICATED, PLAN DIMENSIONS ARE TO COLUMN GRID ON CENTRILINES, NOMINAL SURFACE OF MASONRY, GYPSUM BOARDS OR CONCRETE WALLS

29th floor common area  
 pw - partition wall  
 lw - lining wall

ACxx - AC Units Room  
 ARxx - Archive Room  
 ASxx - Archive Space

ATxx - Atrium/ Entrance  
 BCxx - Baby Care Room  
 CCxx - Corridor/ circulation area

CRxx - Conference Room  
 FYxx - Foyer Area  
 MRxx - Meeting Room

OFxx - Enclosed Office  
 OSxx - Open working space  
 PTxx - Pantry

SRxx - Server Room  
 STxx - Storage Room

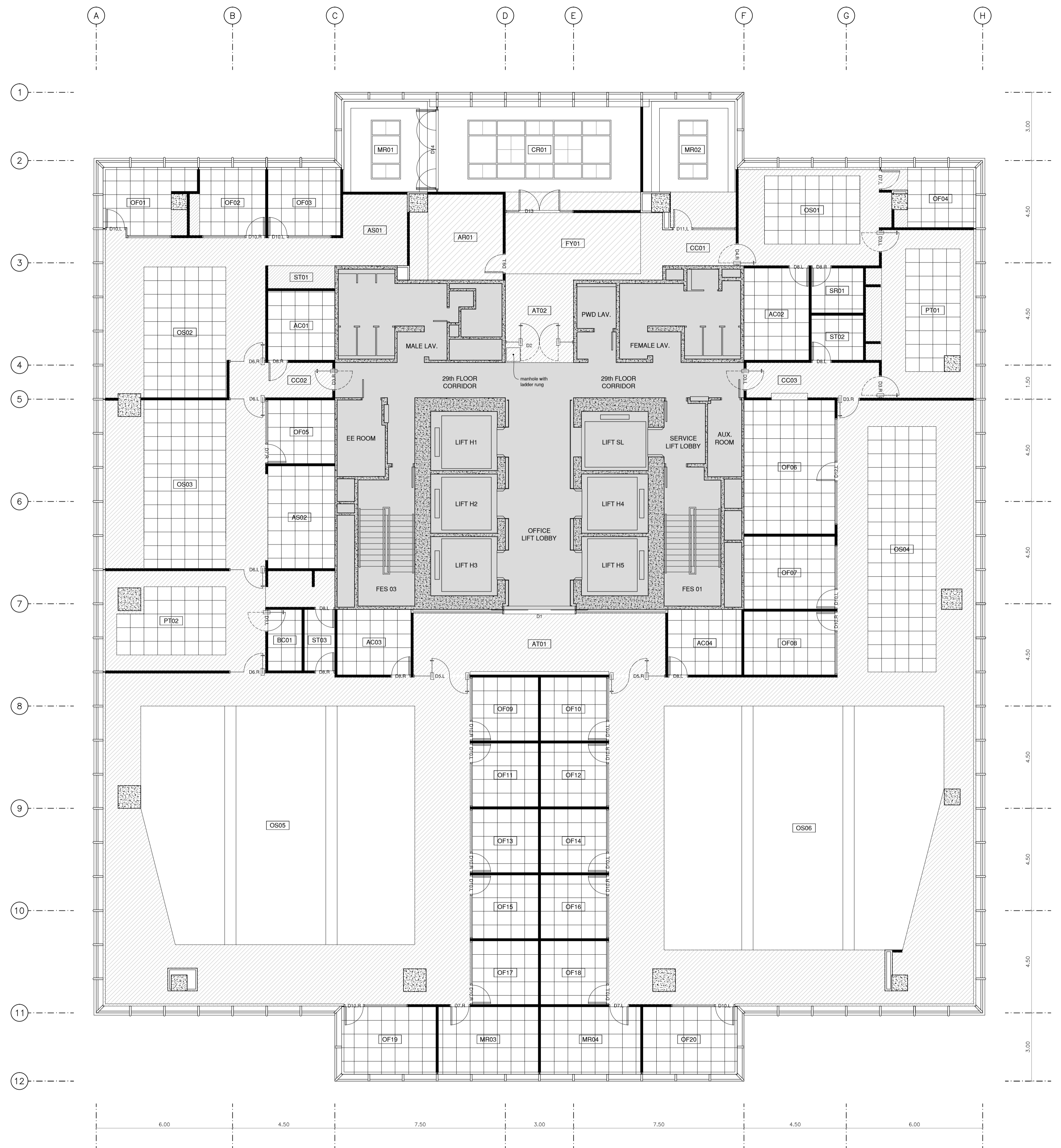
**IOM**  
 International Organization for Migration

**IOM Office extension**  
 6769, Ayala, Manila, Philippines

**Architecture**  
 Construction Documents  
 Civil works

July 2016  
 Floor plan  
 1:100

**IOM-6769-CD-04**

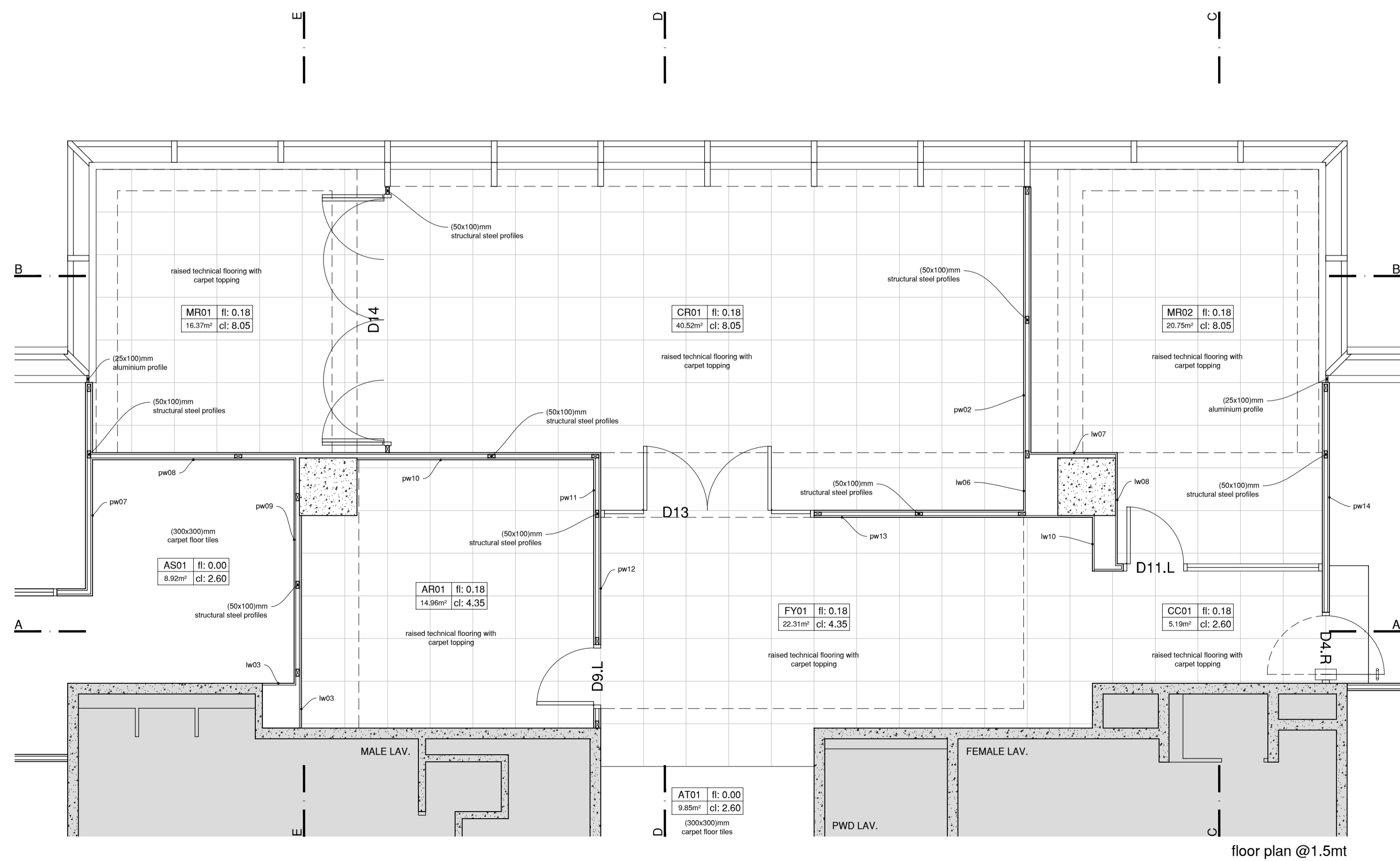
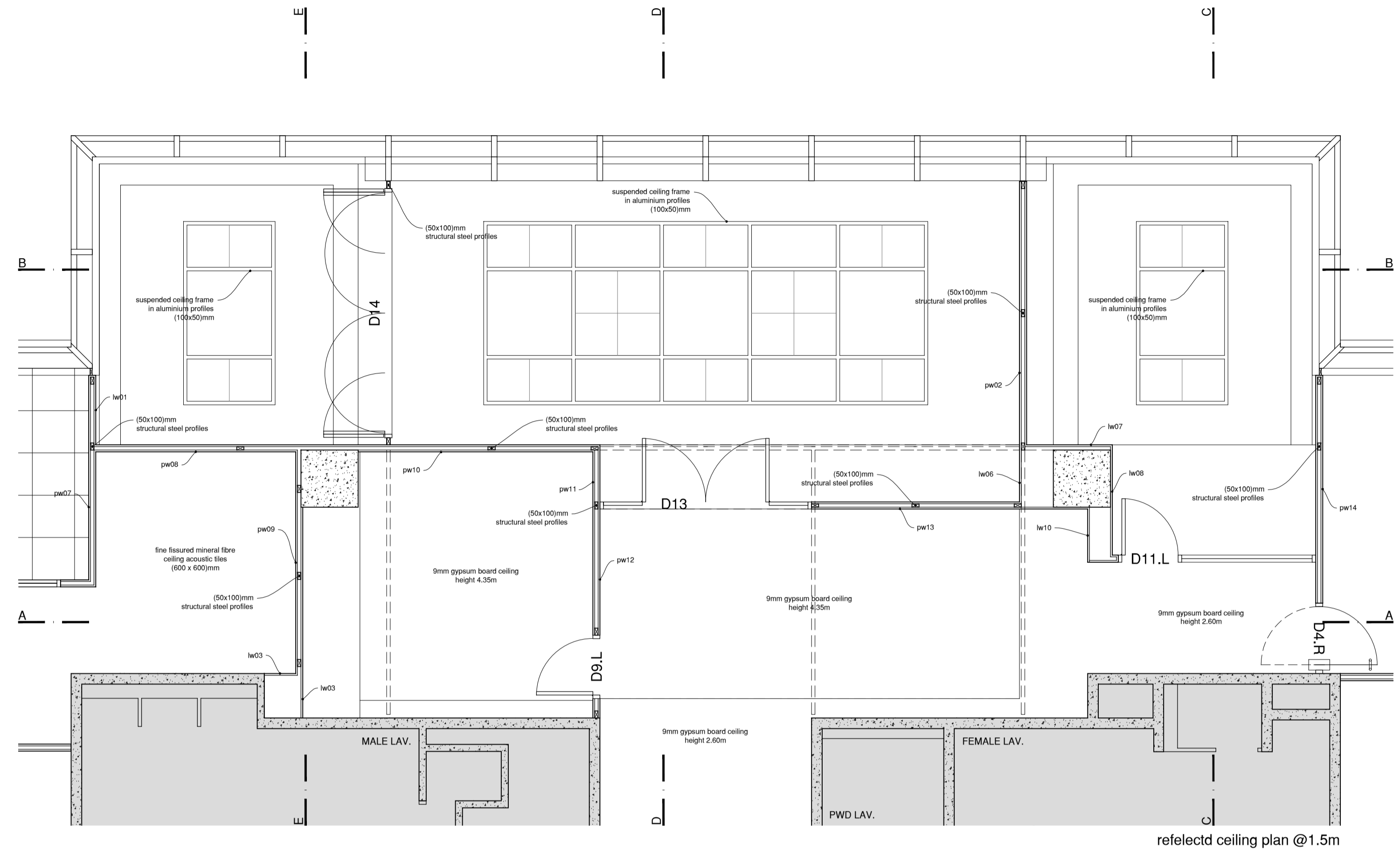
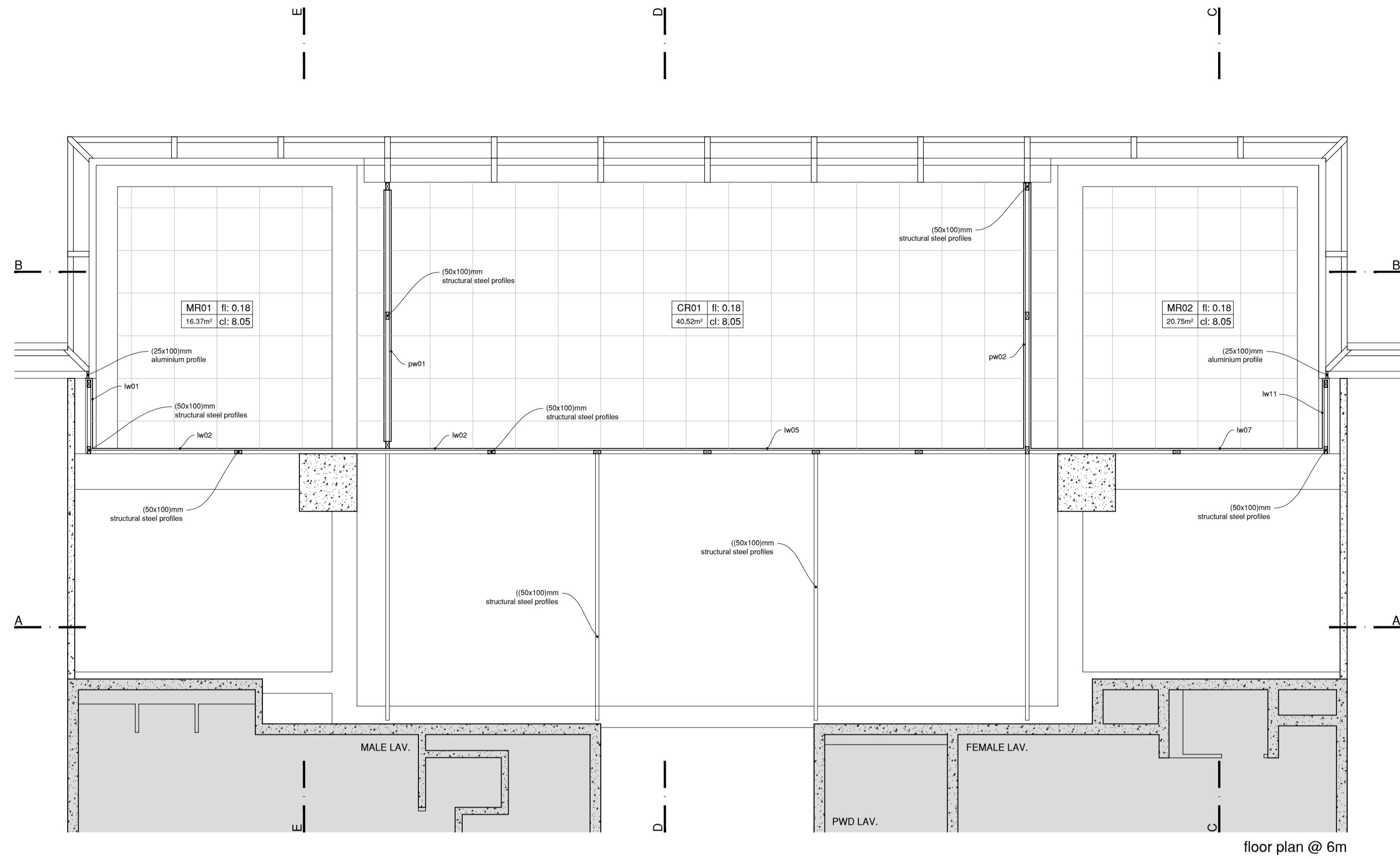


**DRAWING NOTES:**  
DO NOT SCALE THE DRAWINGS.  
UNLESS OTHERWISE INDICATED, PLAN DIMENSIONS ARE TO COLUMN GRID ON CENTRILINES, NOMINAL SURFACE OF MASONRY, GYPSUM BOARDS OR CONCRETE WALLS

- 29th floor common area
- 9mm gypsum ceiling at 2.05m
- 9mm gypsum ceiling at 2.60m
- 9mm gypsum ceiling at 4.35m
- acoustic ceiling tiles @2.60m

- ATxx - Atrium/ Entrance
- BCxx - Baby Care Room
- CCxx - Corridor/ circulation area
- CRxx - Conference Room
- FYxx - Foyer Area
- MRxx - Meeting Room

- OFxx - Enclosed Office
- OSxx - Open working space
- PTxx - Pantry
- SRxx - Server Room
- STxx - Storage Room



**DRAWING NOTES:**  
 1. DO NOT SCALE THE DRAWINGS.  
 2. UNLESS OTHERWISE INDICATED, PLAN DIMENSIONS ARE TO COLUMN GRID OR CENTERLINES, NOMINAL SURFACE OF MASONRY, GYPSUM BOARDS OR CONCRETE WALLS

29th floor common area

pw - partition wall  
 lw - lining wall

fl: finish floor level  
 cl: finish ceiling level

ARxx - Archive Room  
 ASxx - Archive Space  
 ATxx - Atrium/ Entrance

CCxx - Corridor/ circulation area  
 CRxx - Conference Room  
 FYxx - Foyer Area

MRxx - Meeting Room

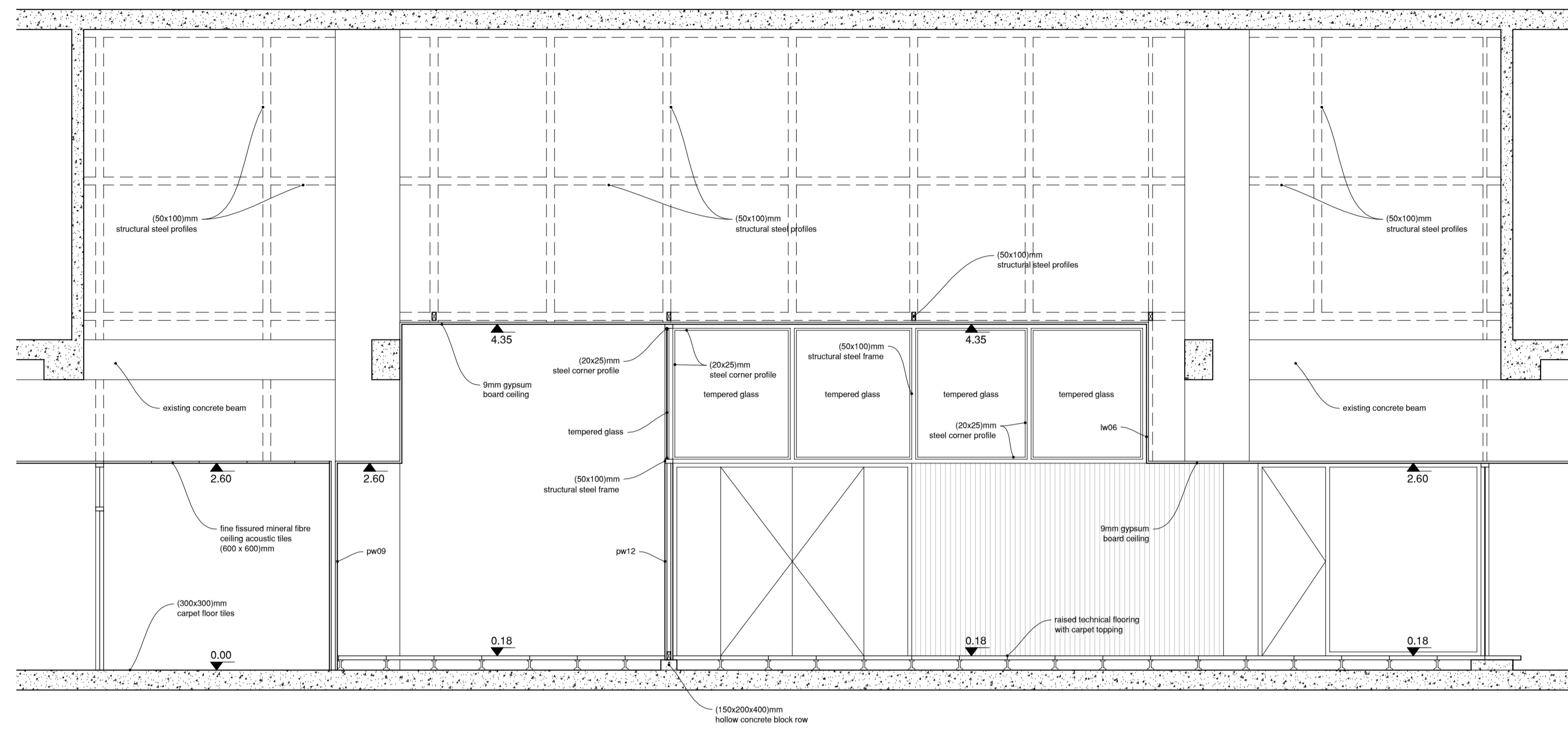
**IOM**  
 International Organization for Migration

**IOM Office extension**  
 6769, Ayala, Manila, Philippines

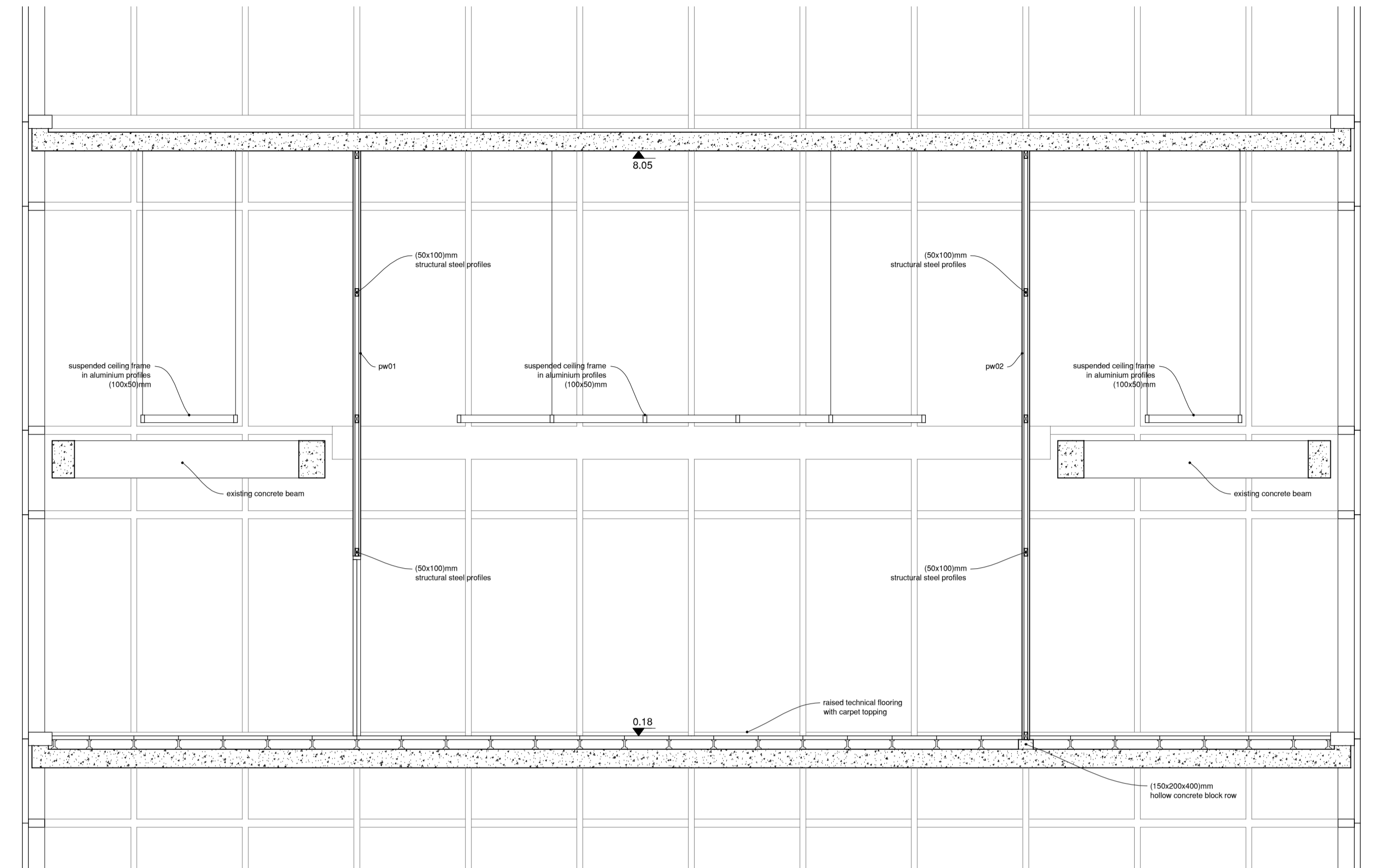
**Architecture**  
 Construction Documents  
 Civil works

July 2016  
 Plans (C1, F1)

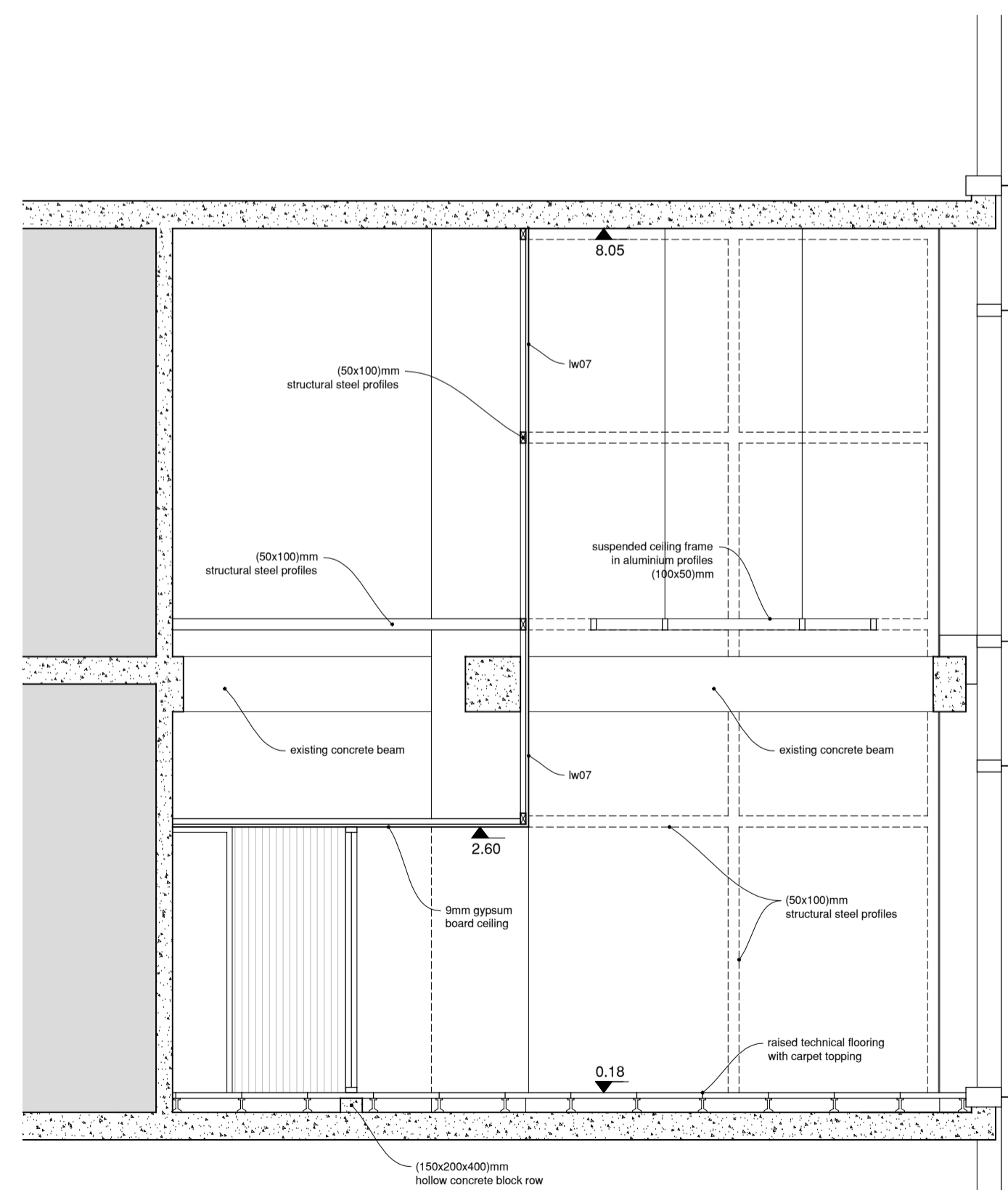
1.50  
**IOM-6769-CD-06**



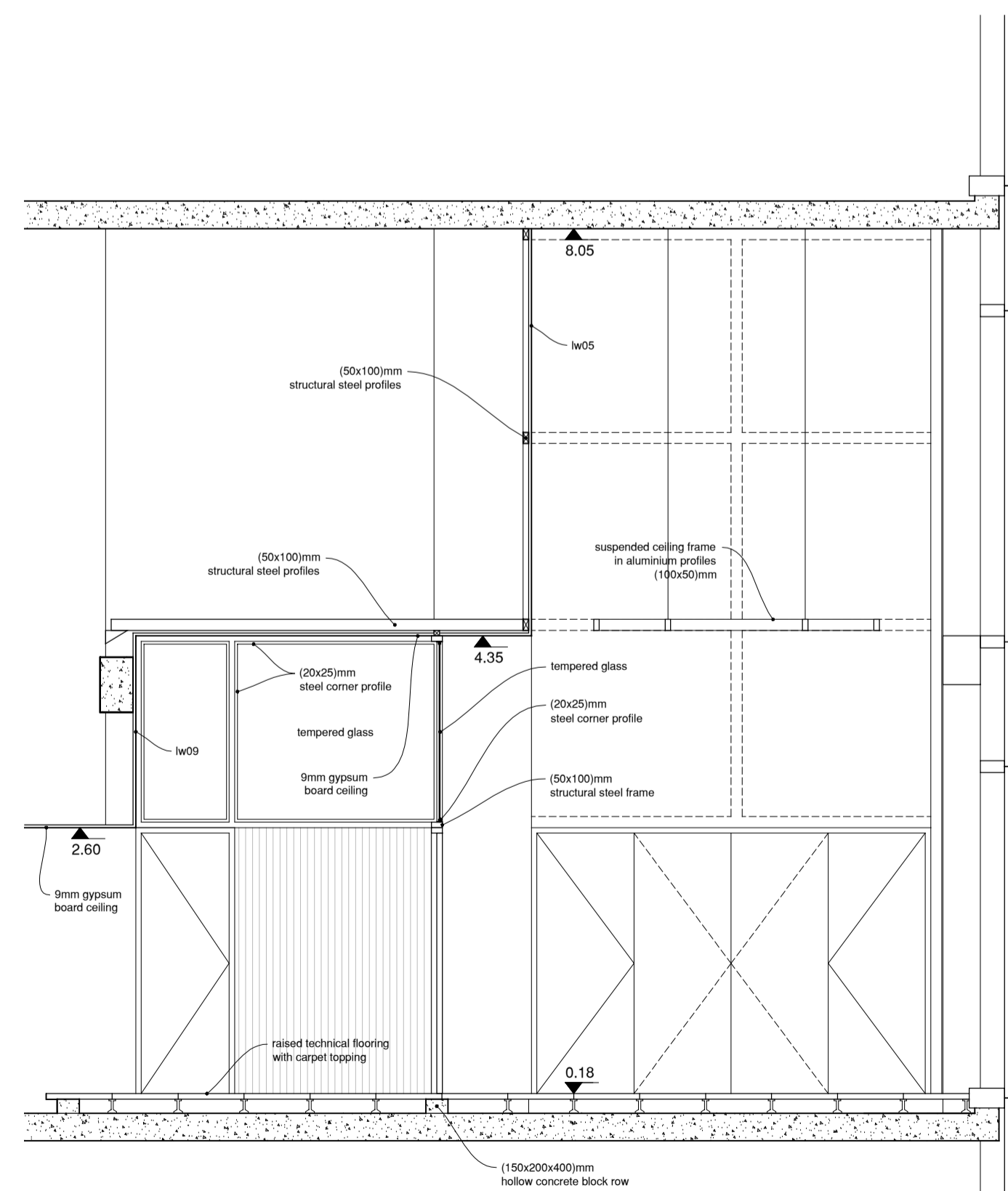
section A



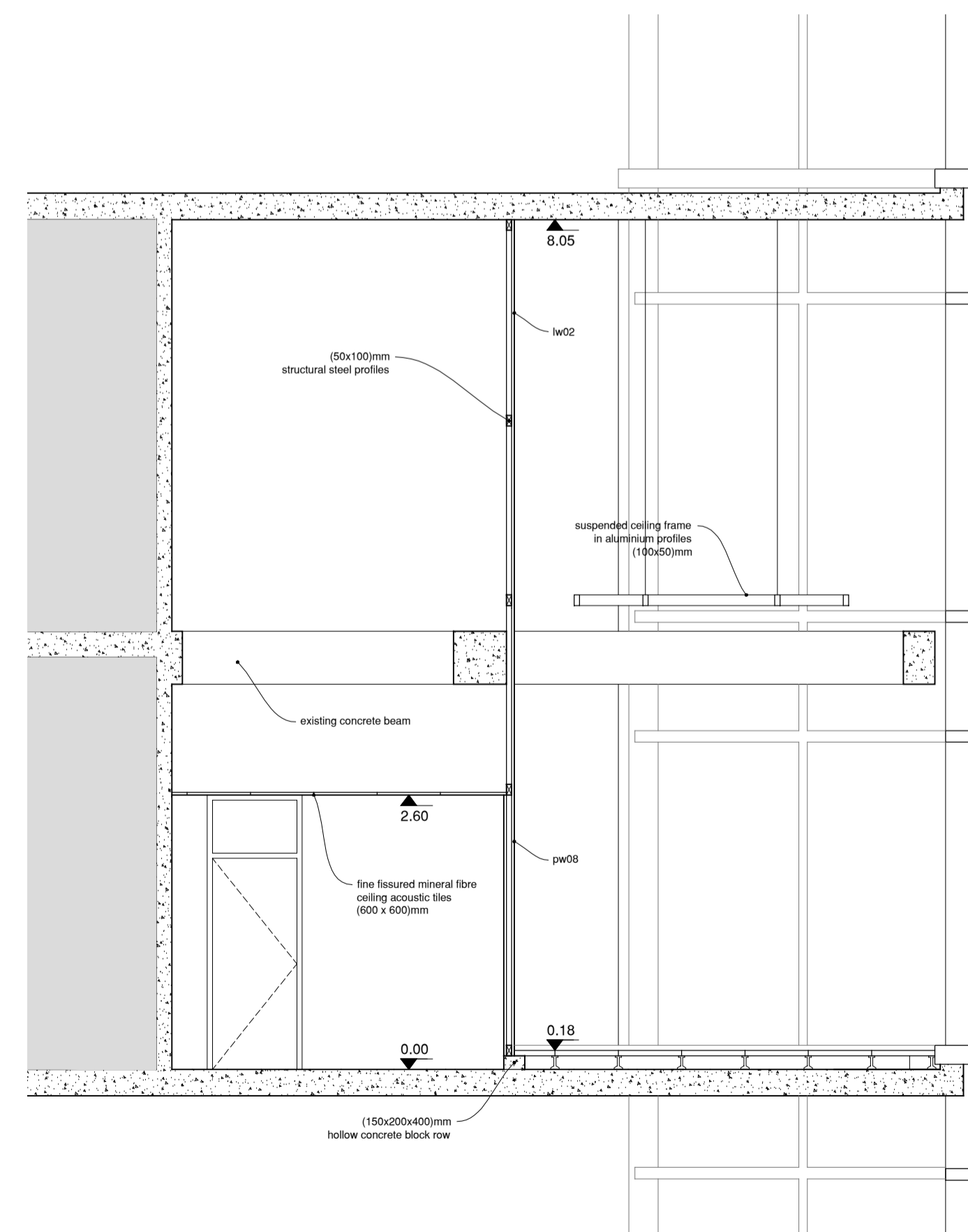
section B



section C



section D



section E

**DRAWING NOTES:**  
DO NOT SCALE THE DRAWINGS.  
UNLESS OTHERWISE INDICATED, PLAN DIMENSIONS ARE TO COLUMN GRID ON CENTRALS; NOMINAL SURFACE OF MASONRY, GYPSUM BOARDS OR CONCRETE WALLS

29th floor common area  
pw - partition wall  
lw - lining wall

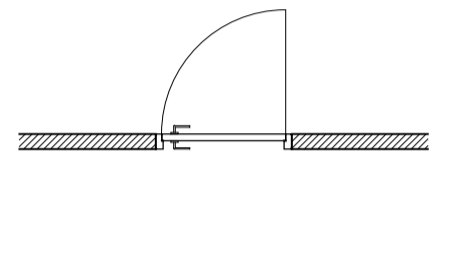
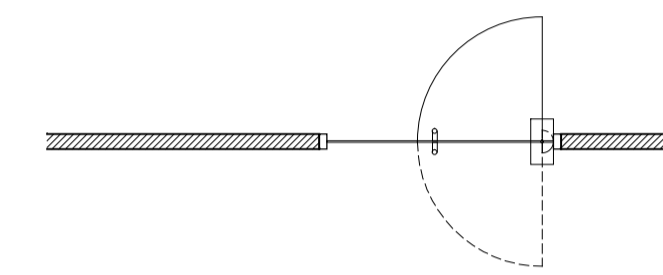
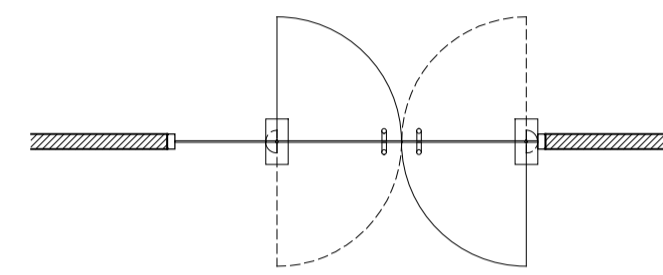
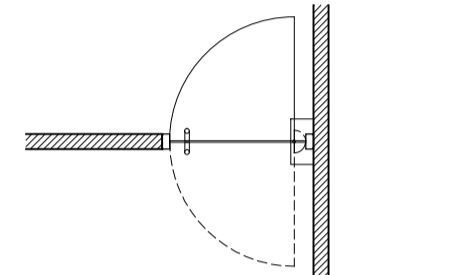
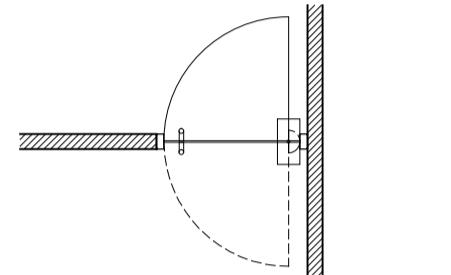
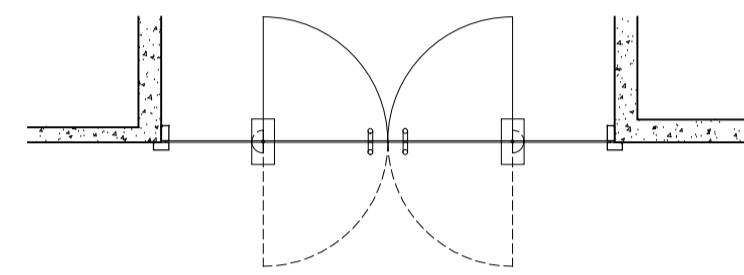
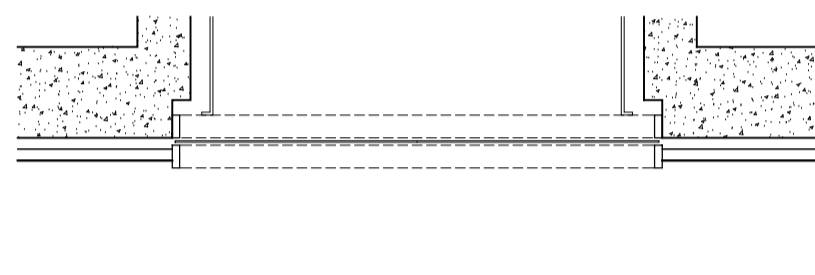
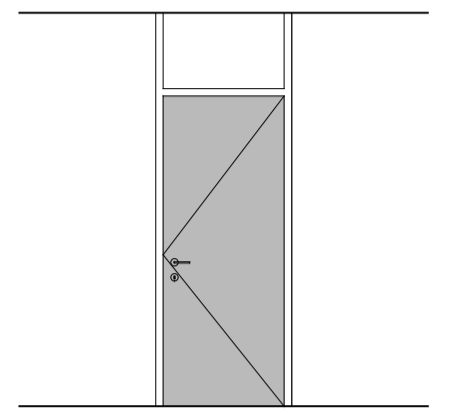
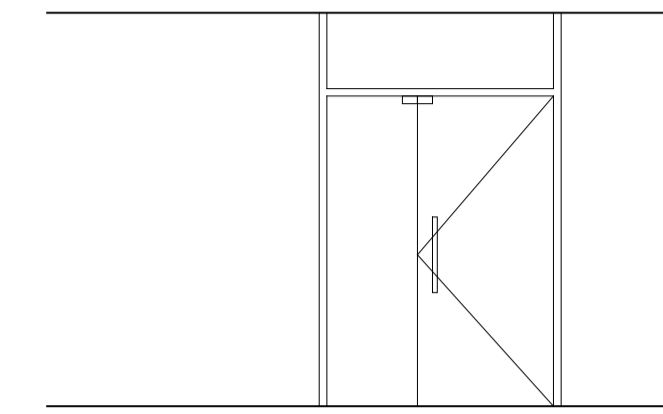
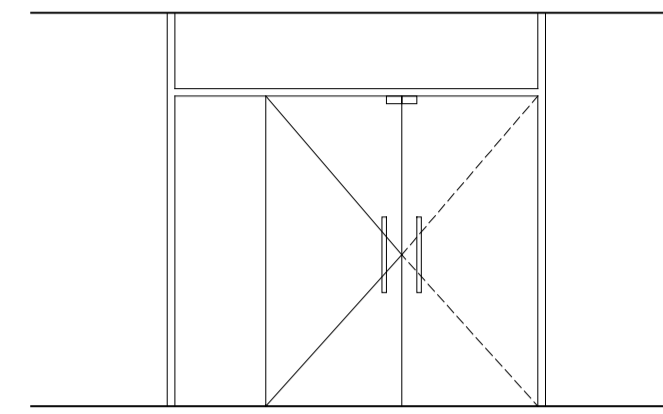
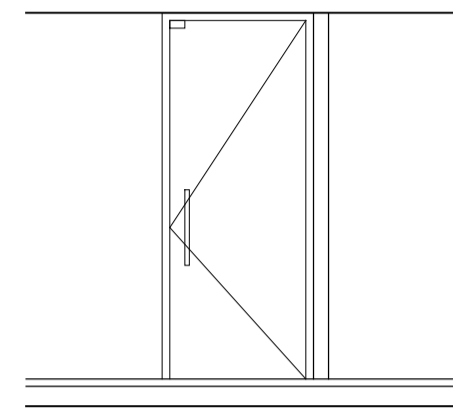
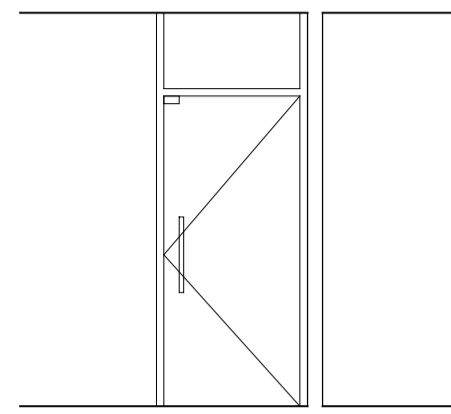
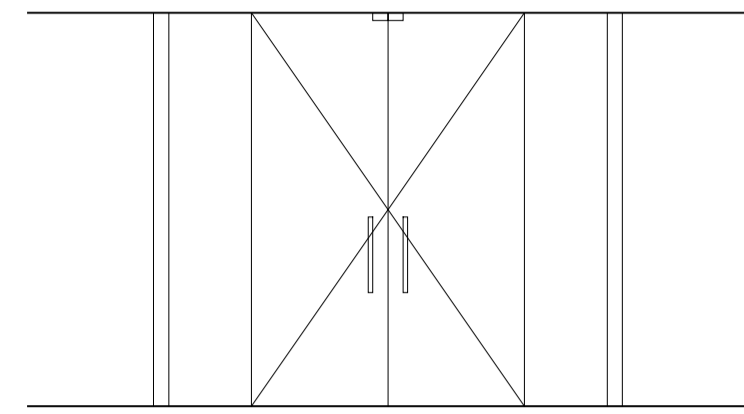
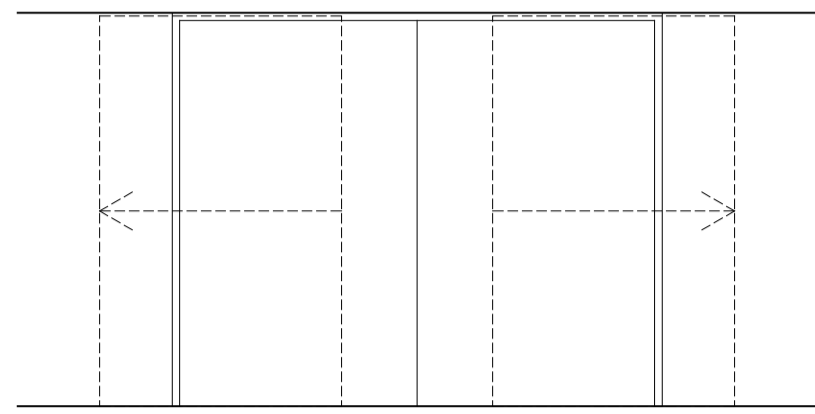
**IOM**  
International Organization for Migration

**IOM Office extension**  
1718, Ayala, Manila, Philippines

**Architecture**  
Construction Documents  
Civil works

July 2016  
Sections A, B, C, D, E

**IOM-6789-CD-07**  
1/50



| D1                   | material                      | finishing | aprox. dim. (mm) | qty. |
|----------------------|-------------------------------|-----------|------------------|------|
| Wall opening         |                               |           | 3240 x 2600      | -    |
| Frame                | solid wood                    | paint     | Ø 150 x 50       | -    |
| Door leaf            | tempered glass                | -         | 1600 x 2000      | 2    |
| Fixed panel (bottom) | -                             | -         | -                | -    |
| Fixed panel (top 1)  | -                             | -         | -                | -    |
| Fixed panel (top 2)  | -                             | -         | -                | -    |
| lock system:         | electronic w/ human sensor    | -         | -                | -    |
| Other observations:  | sliding system to be included |           |                  |      |

| D2                   | material                                       | finishing | aprox. dim. (mm) | qty. |
|----------------------|--|-----------|------------------|------|
| Wall opening         |  |           | 3000 x 2600      | -    |
| Frame                | solid timber                                   | paint     | Ø 100 x 50       | -    |
| Door leaf            | tempered glass                                 | -         | 1000 x 1000      | 2    |
| Fixed panel (bottom) | tempered glass                                 | -         | 575 x 2600       | 2    |
| Fixed panel (top 1)  | -  | -         | -                | 1    |
| Fixed panel (top 2)  | -  | -         | -                | 1    |
| lock system:         | card reader                                    | -         | -                | -    |
| Other observations:  | floor hinges and other hardware to be included |           |                  |      |

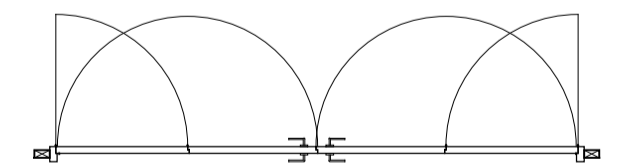
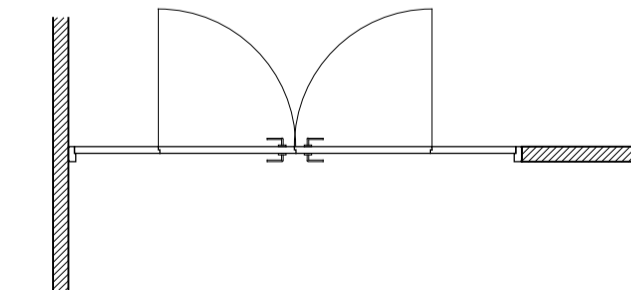
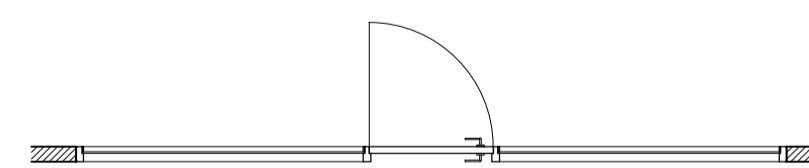
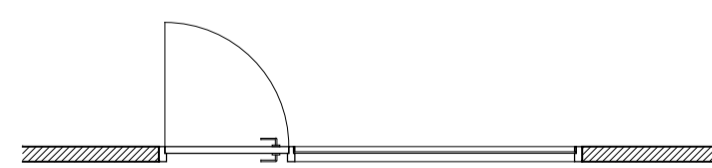
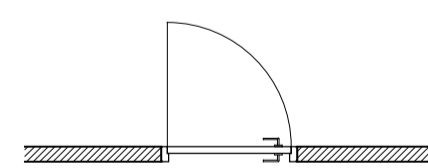
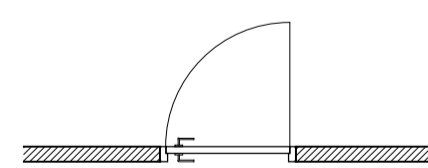
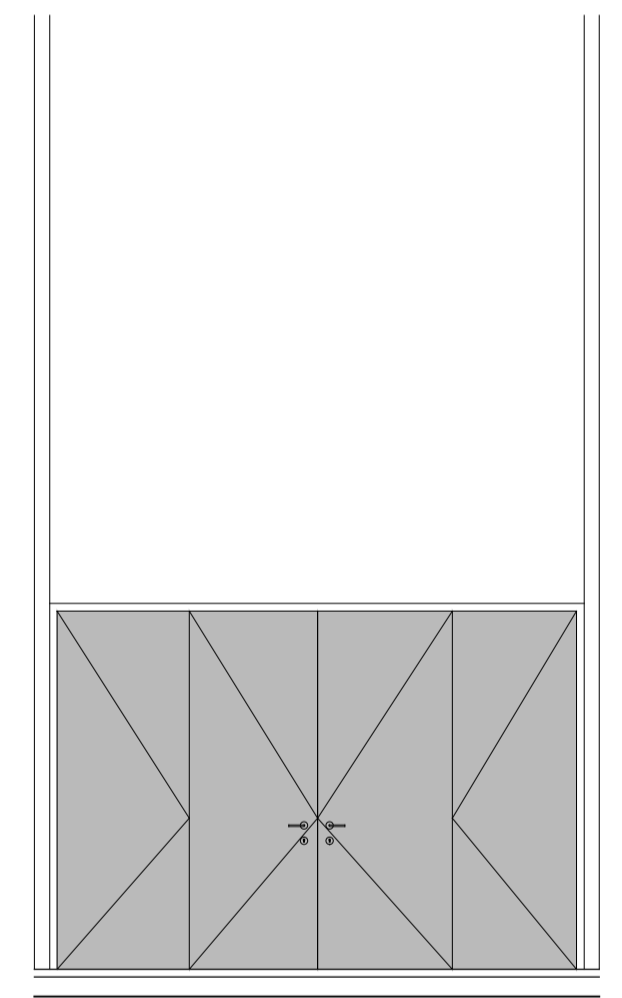
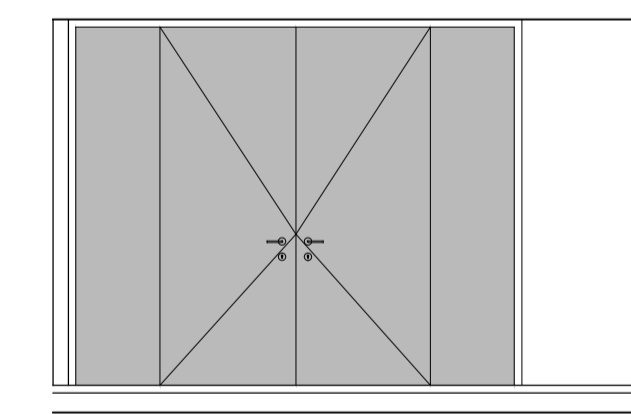
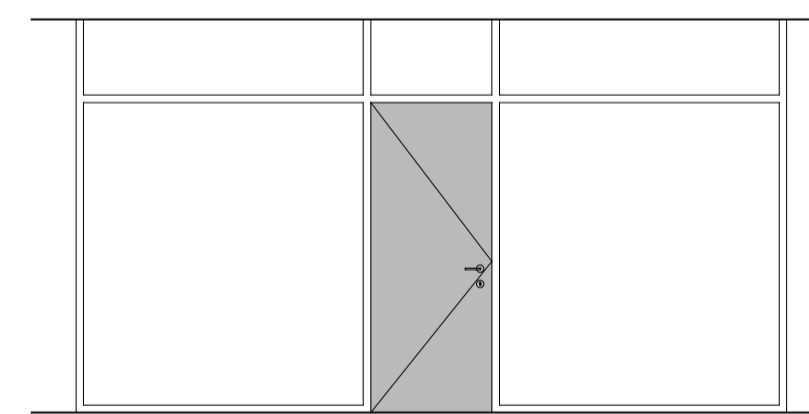
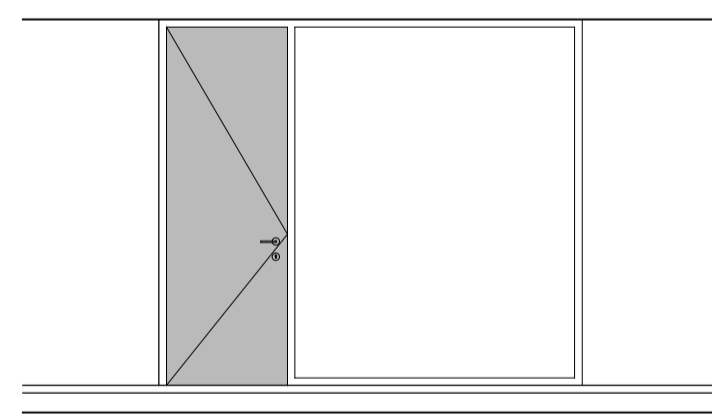
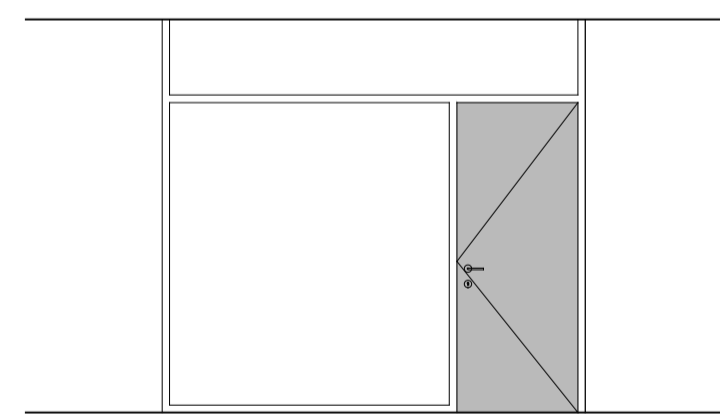
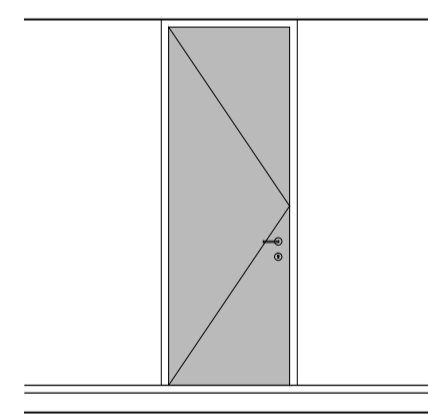
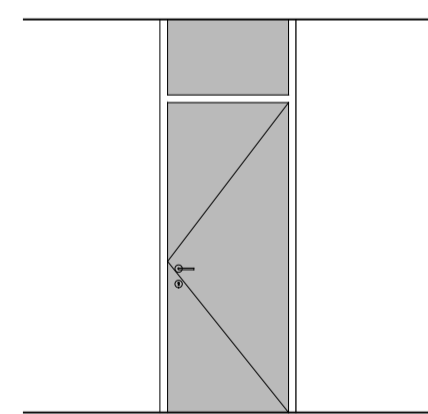
| D3                   | material                                       | finishing | aprox. dim. (mm) | qty. |
|----------------------|--|-----------|------------------|------|
| Wall opening         |  |           | 1000 x 2600      | -    |
| Frame                | solid timber                                   | paint     | Ø 100 x 50       | -    |
| Door leaf            | tempered glass                                 | -         | 900 x 2050       | 1    |
| Fixed panel (bottom) | -  | -         | -                | -    |
| Fixed panel (top 1)  | tempered glass                                 | -         | 920 x 510        | 1    |
| Fixed panel (top 2)  | -  | -         | -                | -    |
| lock system:         | card reader                                    | -         | -                | -    |
| Other observations:  | floor hinges and other hardware to be included |           |                  |      |

| D4                   | material                                       | finishing | aprox. dim. (mm) | qty. |
|----------------------|--|-----------|------------------|------|
| Wall opening         |  |           | 1000 x 2420      | -    |
| Frame                | solid timber                                   | paint     | Ø 100 x 50       | -    |
| Door leaf            | tempered glass                                 | -         | 900 x 2370       | 1    |
| Fixed panel (bottom) | -  | -         | -                | -    |
| Fixed panel (top 1)  | -  | -         | -                | -    |
| Fixed panel (top 2)  | -  | -         | -                | -    |
| lock system:         | card reader                                    | -         | -                | -    |
| Other observations:  | floor hinges and other hardware to be included |           |                  |      |

| D5                   | material                                       | finishing | aprox. dim. (mm) | qty. |
|----------------------|--|-----------|------------------|------|
| Wall opening         |  |           | 2500 x 2600      | -    |
| Frame                | solid timber                                   | paint     | Ø 100 x 50       | -    |
| Door leaf            | tempered glass                                 | -         | 900 x 2050       | 2    |
| Fixed panel (bottom) | tempered glass                                 | -         | 610 x 2050       | 1    |
| Fixed panel (top 1)  | tempered glass                                 | -         | 2420 x 510       | 1    |
| Fixed panel (top 2)  | -  | -         | -                | -    |
| lock system:         | card reader                                    | -         | -                | -    |
| Other observations:  | floor hinges and other hardware to be included |           |                  |      |

| D6                   | material  | finishing | aprox. dim. (mm) | qty. |
|----------------------|---|-----------|------------------|------|
| Wall opening         |   |           | 1600 x 2600      | -    |
| Frame                | solid timber                                      | paint     | Ø 100 x 50       | -    |
| Door leaf            | tempered glass                                    | -         | 900 x 2050       | 1    |
| Fixed panel (bottom) | tempered glass                                    | -         | 610 x 2050       | 1    |
| Fixed panel (top 1)  | tempered glass                                    | -         | 1520 x 510       | 1    |
| Fixed panel (top 2)  | -   | -         | -                | -    |
| lock system:         | card reader ( in three units) / key (in one unit) | -         | -                | -    |
| Other observations:  | floor hinges and other hardware to be included    |           |                  |      |

| D7                   | material  | finishing | aprox. dim. (mm) | qty. |
|----------------------|---|-----------|------------------|------|
| Wall opening         |   |           | 900 x 2600       | -    |
| Frame                | solid timber                                      | paint     | Ø 100 x 50       | -    |
| Door leaf            | plywood/ hollow                                   | melamine  | 820 x 2060       | 1    |
| Fixed panel (bottom) | -   | -         | -                | -    |
| Fixed panel (top 1)  | tempered glass                                    | -         | 820 x 510        | 1    |
| Fixed panel (top 2)  | -   | -         | -                | -    |
| lock system:         | key   | -         | -                | -    |
| Other observations:  | top lock spring and other hardware to be included |           |                  |      |



| D8                   | material  | finishing | aprox. dim. (mm) | qty. |
|----------------------|---|-----------|------------------|------|
| Wall opening         |   |           | 900 x 2600       | -    |
| Frame                | solid timber                                      | paint     | Ø 100 x 50       | -    |
| Door leaf            | plywood/ hollow                                   | melamine  | 820 x 2060       | 1    |
| Fixed panel (bottom) | -   | -         | -                | -    |
| Fixed panel (top 1)  | plywood/ hollow                                   | melamine  | 820 x 510        | 1    |
| Fixed panel (top 2)  | -   | -         | -                | -    |
| lock system:         | key   | -         | -                | -    |
| Other observations:  | top lock spring and other hardware to be included |           |                  |      |

| D9                   | material  | finishing | aprox. dim. (mm) | qty. |
|----------------------|---|-----------|------------------|------|
| Wall opening         |   |           | 900 x 2420       | -    |
| Frame                | solid timber                                      | paint     | Ø 100 x 50       | -    |
| Door leaf            | plywood/ hollow                                   | melamine  | 820 x 2380       | 1    |
| Fixed panel (bottom) | -   | -         | -                | -    |
| Fixed panel (top 1)  | -   | -         | -                | -    |
| Fixed panel (top 2)  | -   | -         | -                | -    |
| lock system:         | card reader                                       | -         | -                | -    |
| Other observations:  | top lock spring and other hardware to be included |           |                  |      |

| D10                  | material  | finishing | aprox. dim. (mm) | qty. |
|----------------------|---|-----------|------------------|------|
| Wall opening         |   |           | 2800 x 2600      | -    |
| Frame                | solid timber                                      | paint     | Ø 100 x 50       | -    |
| Door leaf            | plywood/ hollow                                   | melamine  | 820 x 2060       | 1    |
| Fixed panel (bottom) | tempered glass                                    | -         | 1870 x 2020      | 1    |
| Fixed panel (top 1)  | tempered glass                                    | -         | 2720 x 510       | 1    |
| Fixed panel (top 2)  | -   | -         | -                | -    |
| lock system:         | key   | -         | -                | -    |
| Other observations:  | top lock spring and other hardware to be included |           |                  |      |

| D11                  | material  | finishing | aprox. dim. (mm) | qty. |
|----------------------|---|-----------|------------------|------|
| Wall opening         |   |           | 2800 x 2420      | -    |
| Frame                | solid timber                                      | paint     | Ø 100 x 50       | -    |
| Door leaf            | plywood/ hollow                                   | melamine  | 820 x 2380       | 1    |
| Fixed panel (bottom) | tempered glass                                    | -         | 1870 x 2340      | 1    |
| Fixed panel (top 1)  | -   | -         | -                | -    |
| Fixed panel (top 2)  | -   | -         | -                | -    |
| lock system:         | key   | -         | -                | -    |
| Other observations:  | top lock spring and other hardware to be included |           |                  |      |

| D12                  | material  | finishing | aprox. dim. (mm) | qty. |
|----------------------|---|-----------|------------------|------|
| Wall opening         |   |           | 4700 x 2600      | -    |
| Frame                | solid timber                                      | paint     | Ø 100 x 50       | -    |
| Door leaf            | plywood/ hollow                                   | melamine  | 820 x 2060       | 1    |
| Fixed panel (bottom) | tempered glass                                    | -         | 1870 x 2020      | 2    |
| Fixed panel (top 1)  | tempered glass                                    | -         | 820 x 510        | 1    |
| Fixed panel (top 2)  | tempered glass                                    | -         | 1870 x 510       | 2    |
| lock system:         | card reader                                       | -         | -                | -    |
| Other observations:  | top lock spring and other hardware to be included |           |                  |      |

| D13                  | material  | finishing | aprox. dim. (mm) | qty. |
|----------------------|---|-----------|------------------|------|
| Wall opening         |   |           | 3000 x 2420      | -    |
| Frame                | solid timber                                      | paint     | Ø 100 x 50       | -    |
| Door leaf            | plywood/ hollow                                   | melamine  | 900 x 2380       | 2    |
| Fixed panel (bottom) | plywood/ hollow                                   | melamine  | 560 x 2380       | 2    |
| Fixed panel (top 1)  | -   | -         | -                | -    |
| Fixed panel (top 2)  | -   | -         | -                | -    |
| lock system:         | key   | -         | -                | -    |
| Other observations:  | top lock spring and other hardware to be included |           |                  |      |

| D14                  | material  | finishing | aprox. dim. (mm) | qty. |
|----------------------|---|-----------|------------------|------|
| Wall opening         |   |           | 3335 x 2420      | -    |
| Frame                | solid timber                                      | paint     | Ø 100 x 50       | -    |
| Door leaf            | plywood/ hollow                                   | melamine  | 860 x 2380       | 4    |
| Fixed panel (bottom) | -   | -         | -                | -    |
| Fixed panel (top 1)  | -   | -         | -                | -    |
| Fixed panel (top 2)  | -   | -         | -                | -    |
| lock system:         | key   | -         | -                | -    |
| Other observations:  | top lock spring and other hardware to be included |           |                  |      |

**DRAWING NOTES:**  
DO NOT SCALE THE DRAWINGS.  
UNLESS OTHERWISE INDICATED, PLAN DIMENSIONS ARE TO COLUMN GRID ON CENTRILINES, NOMINAL SURFACE OF MASONRY, GYPSUM BOARDS OR CONCRETE WALLS

**IOM**  
International Organization for Migration

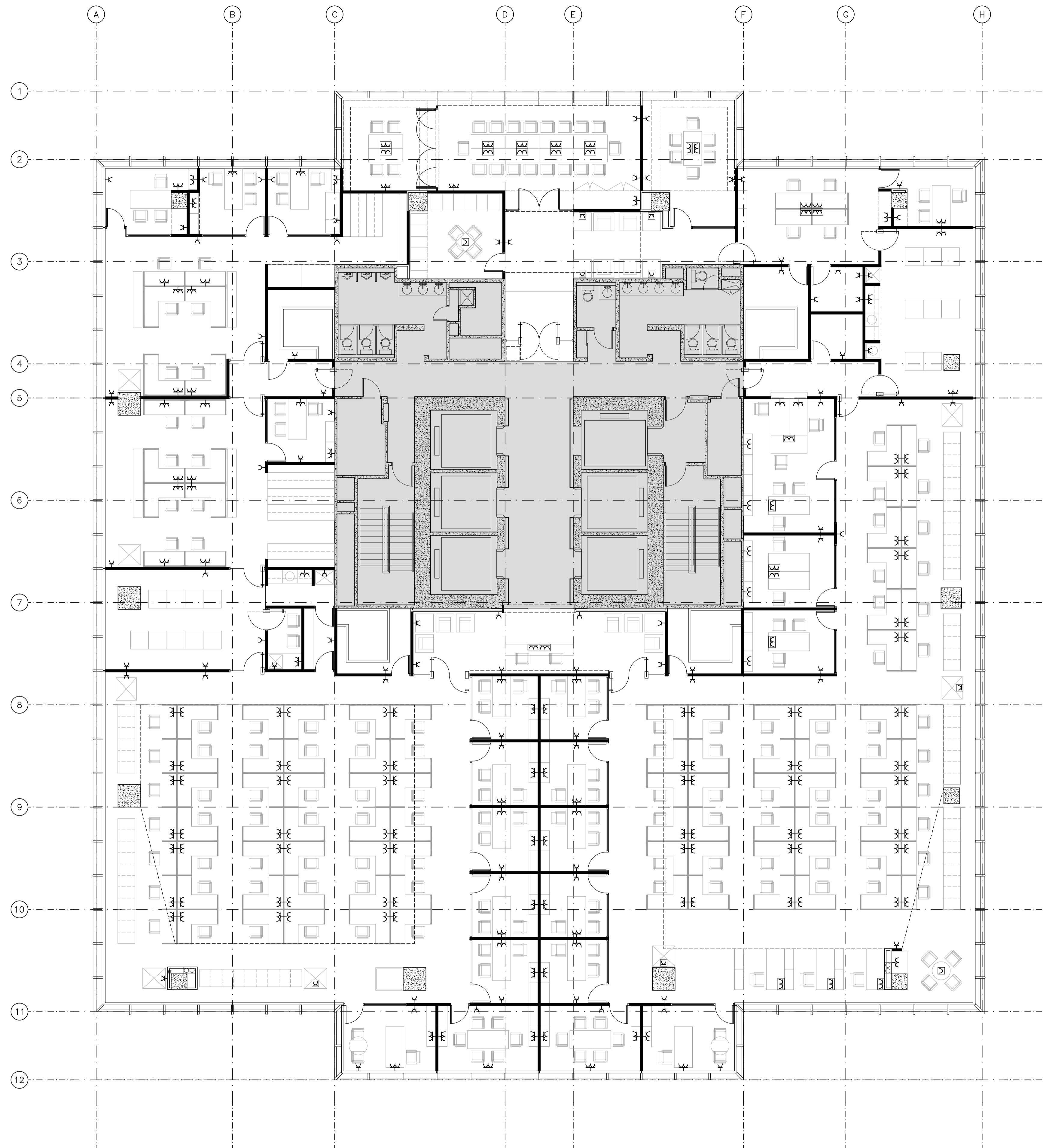
**IOM Office extension**  
1718, Ayala, Manila, Philippines

**Architecture**  
Construction Documents  
Civil works

July 2016  
Door schedule

**IOM-6789-CD-08**  
1/50





**DRAWING NOTES:**  
 DO NOT SCALE THE DRAWINGS.  
 UNLESS OTHERWISE INDICATED, PLAN DIMENSIONS ARE TO COLUMN GRID ON CENTRLINES, NOMINAL SURFACE OF MASONRY, GYPSUM BOARDS OR CONCRETE WALLS

29th floor common area

Wall mounted single power socket  
 Wall/ Desk mounted double power socket

Floor single power socket  
 Floor double power socket

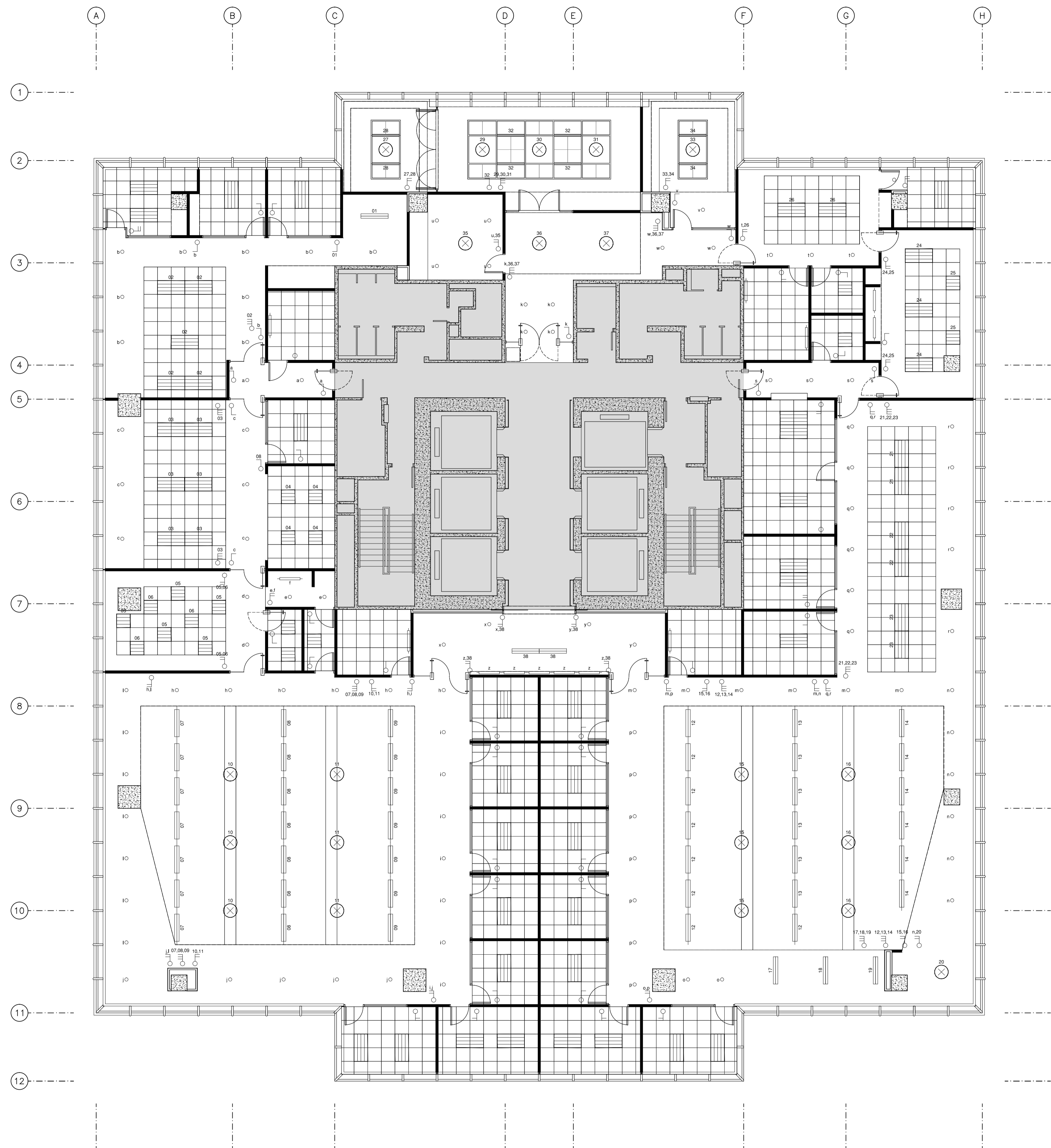
**IOM**  
 International Organization for Migration

**IOM Office extension**  
 6789, Ayala, Manila, Philippines

**Architecture**  
 Construction Documents  
 Electrical

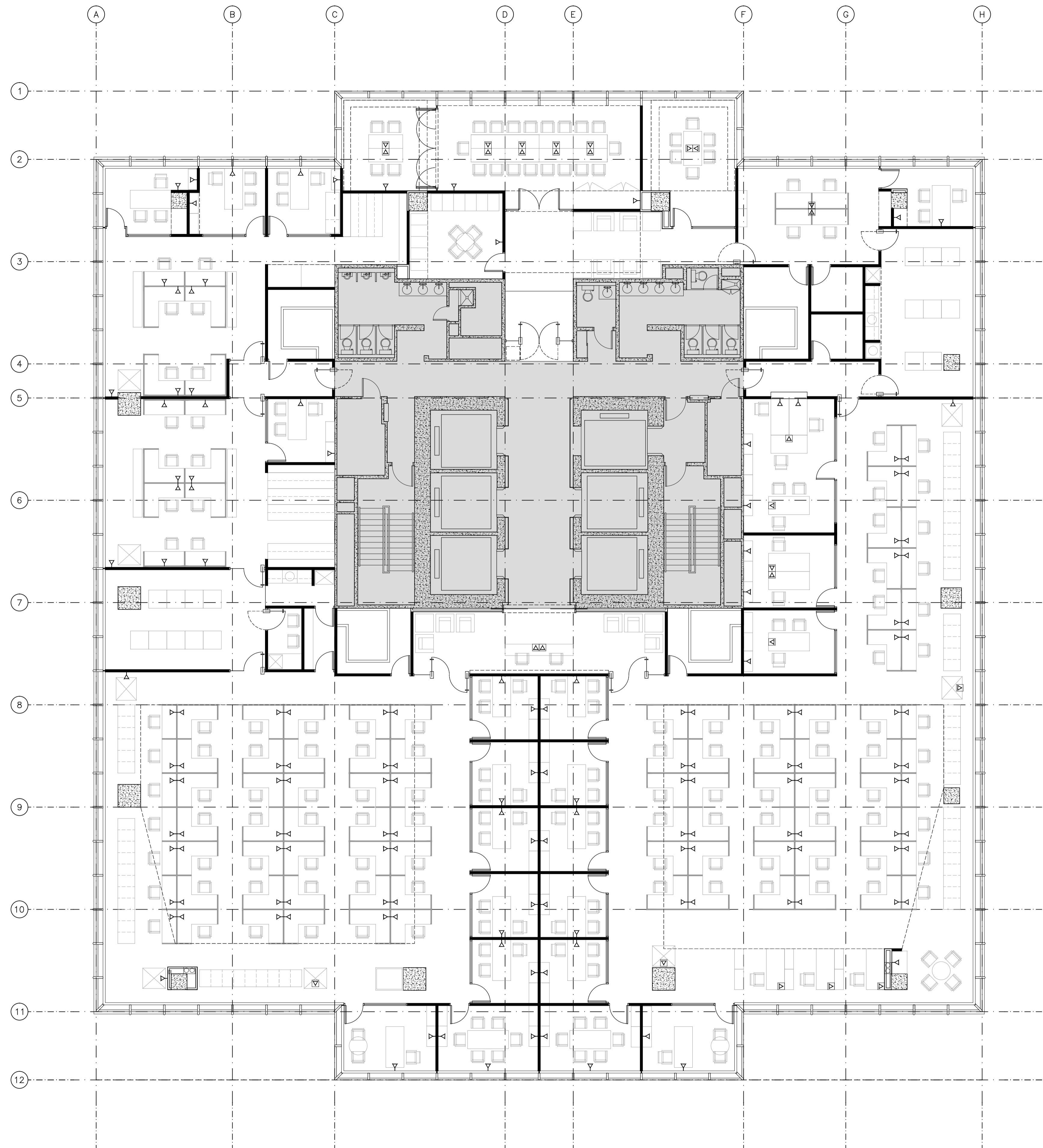
July 2016  
 Power outlets layout  
 1:100

**IOM-6789-CD-09**



**DRAWING NOTES:**  
 DO NOT SCALE THE DRAWINGS.  
 UNLESS OTHERWISE INDICATED, PLAN DIMENSIONS ARE TO COLUMN GRID ON CENTRILINES, NOMINAL SURFACE OF MASONRY, GYPSUM BOARDS OR CONCRETE WALLS

- 29th floor common area
- lighting fixture (600 x 1200)mm
- lighting fixture (600 x 600)mm
- 900mm linear fluorescent
- 1200mm linear fluorescent
- 1200mm double linear fluorescent suspended lamp
- 1200mm double linear fluorescent recessed lamp
- LED suspended lamps Ø600mm approx.
- LED ring down lights Ø150mm
- single switch
- double switch
- triple switch



**DRAWING NOTES:**  
 DO NOT SCALE THE DRAWINGS.  
 UNLESS OTHERWISE INDICATED, PLAN DIMENSIONS ARE  
 TO COLUMN GRID OR CENTERLINES, NOMINAL SURFACE  
 OF MASONRY, GYPSUM BOARDS OR CONCRETE WALLS

29th floor common area

- ▽ Wall/ Desk mounted single LAN/PHONE sockets
- ☒ Floor single LAN/PHONE sockets

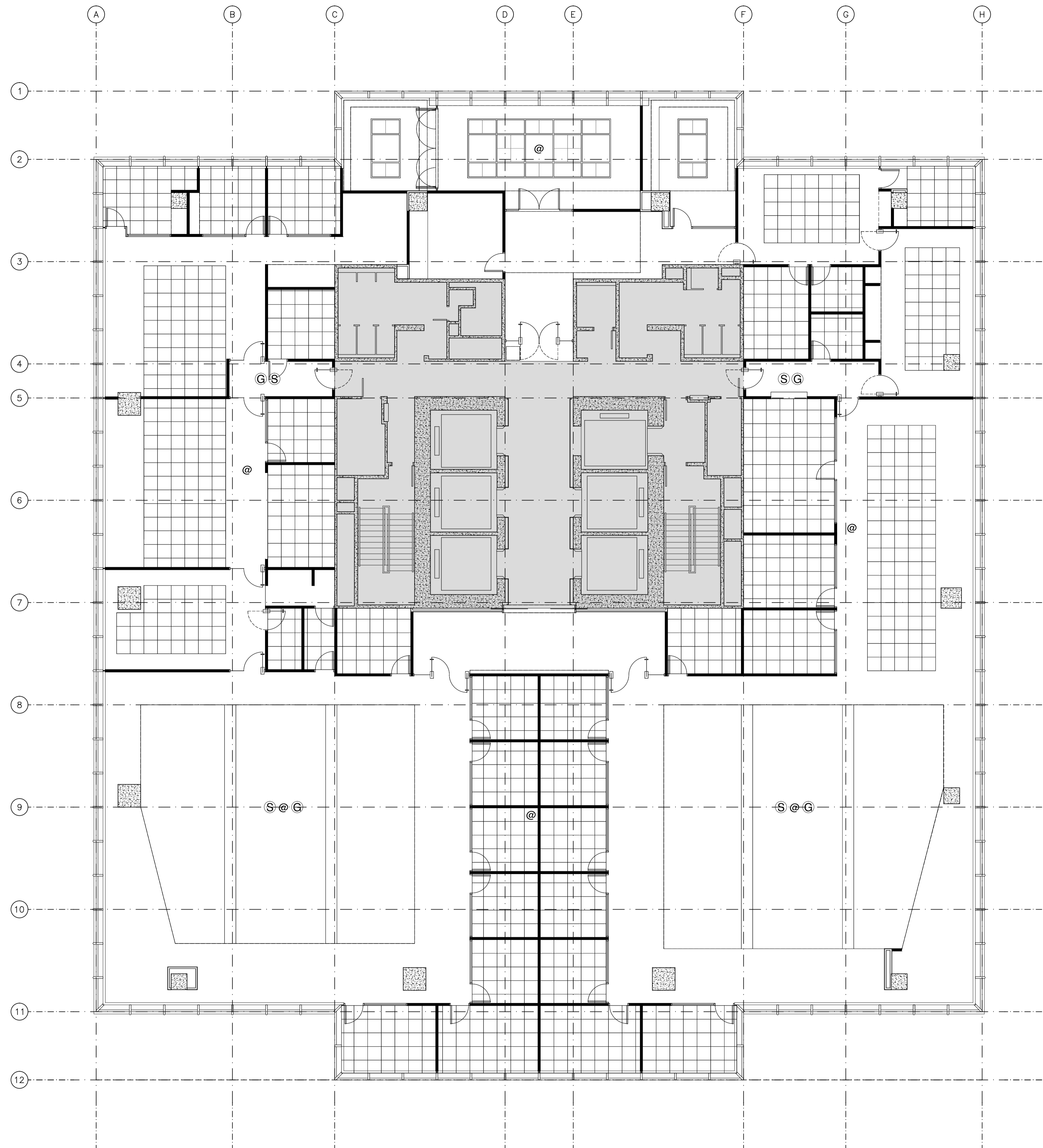
**IOM**  
 International Organization for Migration

**IOM Office extension**  
 6789, Ayala, Manila, Philippines

**Architecture**  
 Construction Documents  
 Telecommunications

July 2016  
 Phone/ data network outlets layout

**IOM-6789-CD-11**  
 1:100



**DRAWING NOTES:**  
 DO NOT SCALE THE DRAWINGS.  
 UNLESS OTHERWISE INDICATED, PLAN DIMENSIONS ARE  
 TO COLUMN GRID ON CENTRILINES, NOMINAL SURFACE  
 OF MASONRY, GYPSUM BOARDS OR CONCRETE WALLS

29th floor common area

- @ Ceiling/wall mounted wireless access points
- G Existing Globe Mobile lines' antenna
- S Existing Smart Mobile lines' antenna

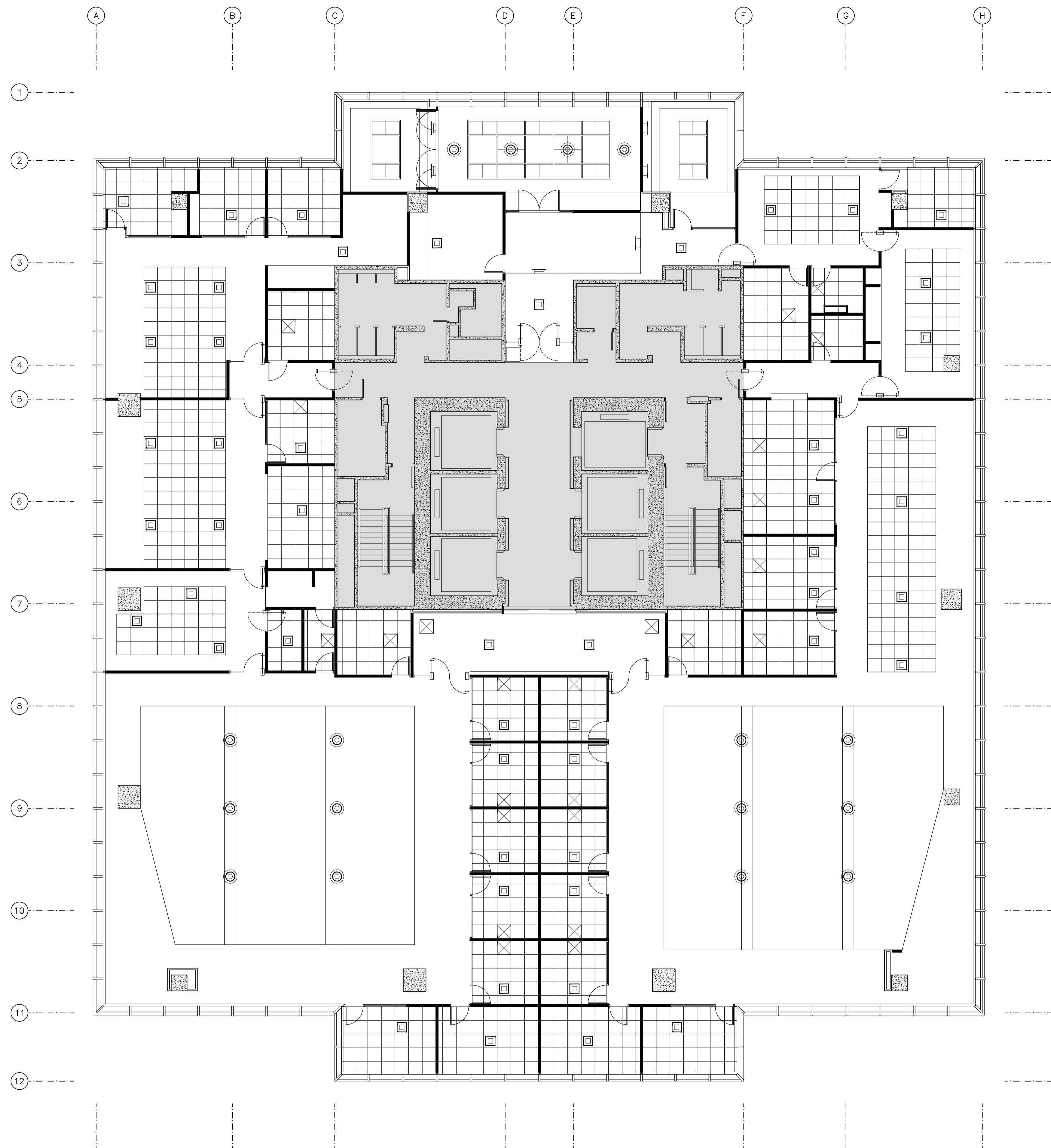
**IOM**  
 International Organization for Migration

**IOM Office extension**  
 6769, Ayala, Manila, Philippines

**Architecture**  
 Construction Documents  
 Telecommunications

July 2016  
 Wireless and mobile lines access points

**IOM-6769-CD-12**  
 1:100



**DRAWING NOTES:**  
 DO NOT SCALE THE DRAWINGS.  
 UNLESS OTHERWISE INDICATED, PLAN DIMENSIONS ARE TO COLUMN GRID ON CENTRILINES, NOMINAL SURFACE OF MASONRY, GYPSUM BOARDS OR CONCRETE WALLS

29th floor common area

AC unit split  
 Ventilation grid (600 x 600)mm

Ceiling mounted AC blower grid  
 Suspended AC blower grid (visible conduits)  
 Wall mounted AC blower grid

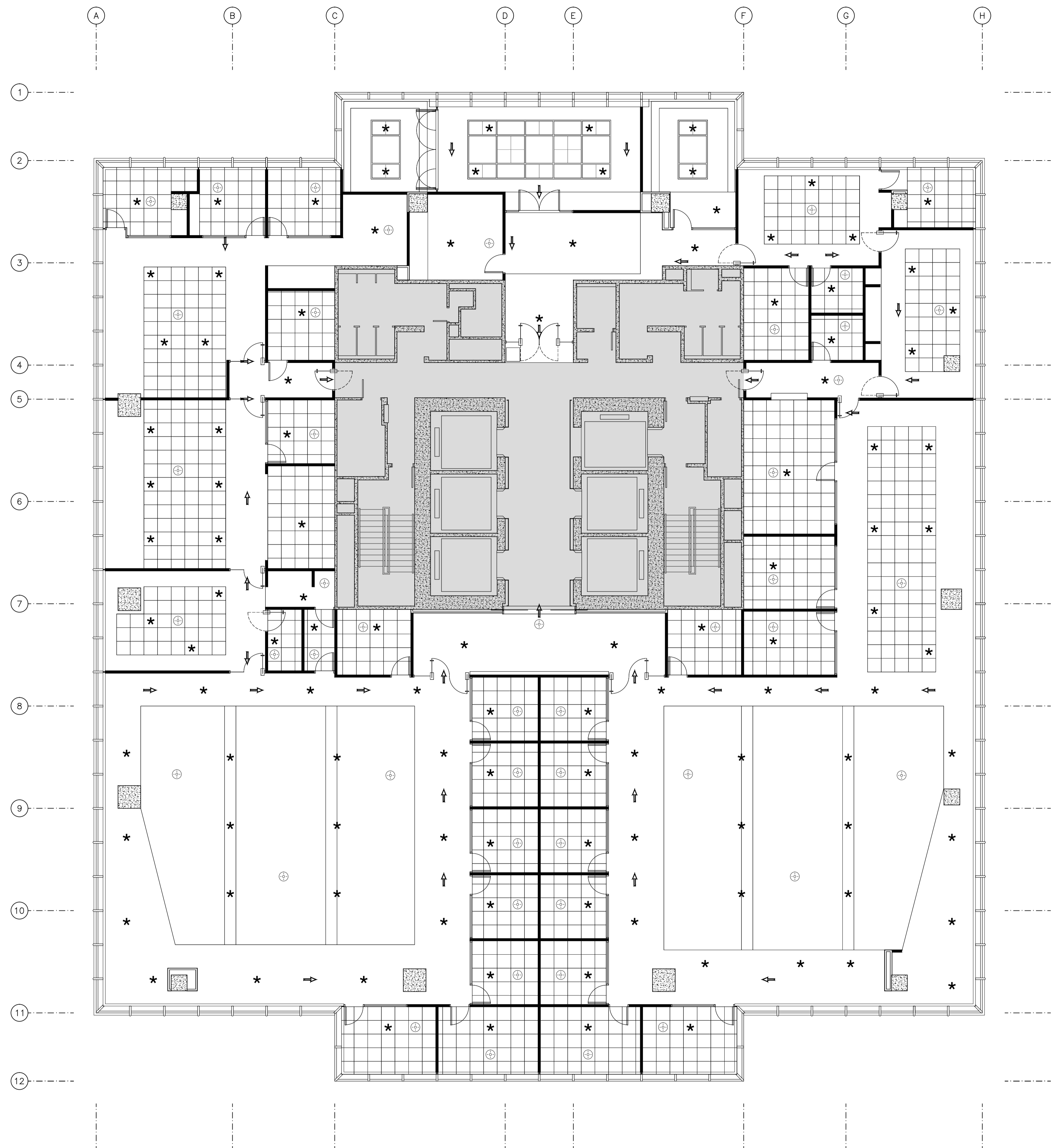
**IOM**  
 International Organization for Migration

**IOM Office extension**  
 67th, Ayala, Manila, Philippines

**Architecture**  
 Construction Documents  
 Ventilation and air conditioning

July 2016  
 AC blowers and extractors layout  
 1:100

**IOM-6789-CD-13**



**DRAWING NOTES:**  
 DO NOT SCALE THE DRAWINGS.  
 UNLESS OTHERWISE INDICATED, PLAN DIMENSIONS ARE  
 TO COLUMN GRID ON CENTRILINES, NOMINAL SURFACE  
 OF MASONRY, GYPSUM BOARDS OR CONCRETE WALLS

29th floor common area

- \* sprinkler
- ⊕ smoke detector
- emergency exit indicators

**IOM**  
 International Organization for Migration

**IOM Office extension**  
 67th, Ayala, Manila, Philippines

**Architecture**  
 Construction Documents  
 Security and Fire Safety

July 2016  
 Sprinklers, smoke detectors and signage  
 1:100

**IOM-6789-CD-14**